

MLDS CENTER

Maryland Longitudinal
Data System

Better Data • Informed Choices • Improved Results

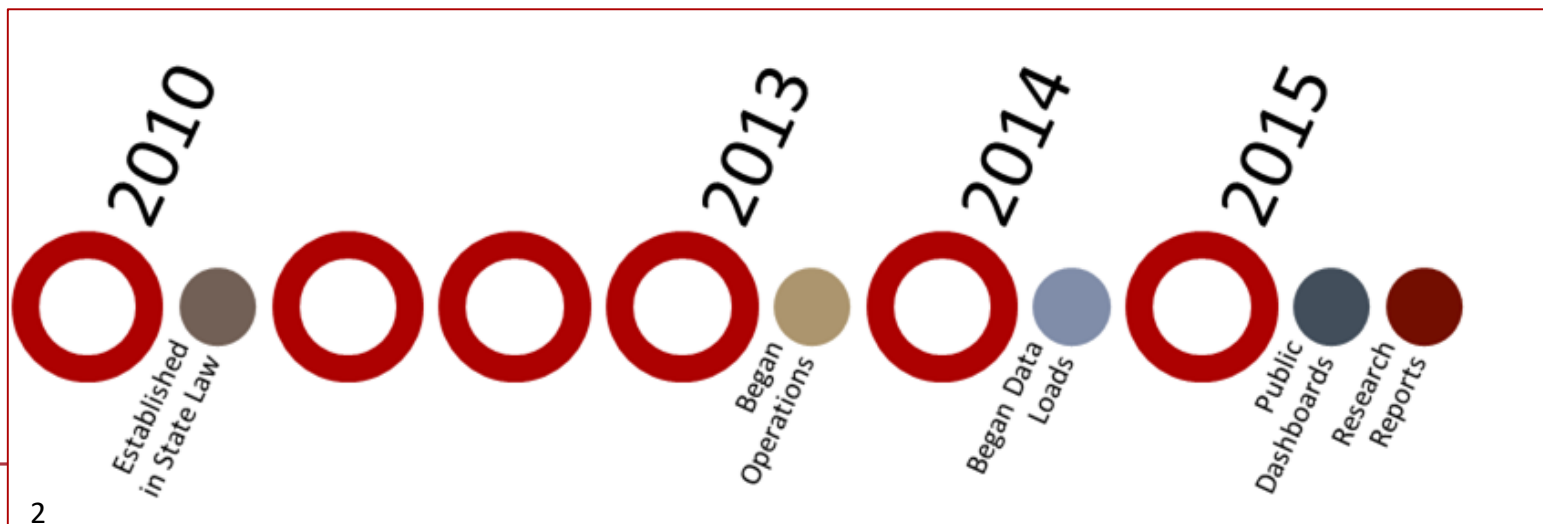
Building a Collaborative Research Agenda to Inform Decision- Making in Maryland

March 3, 2020

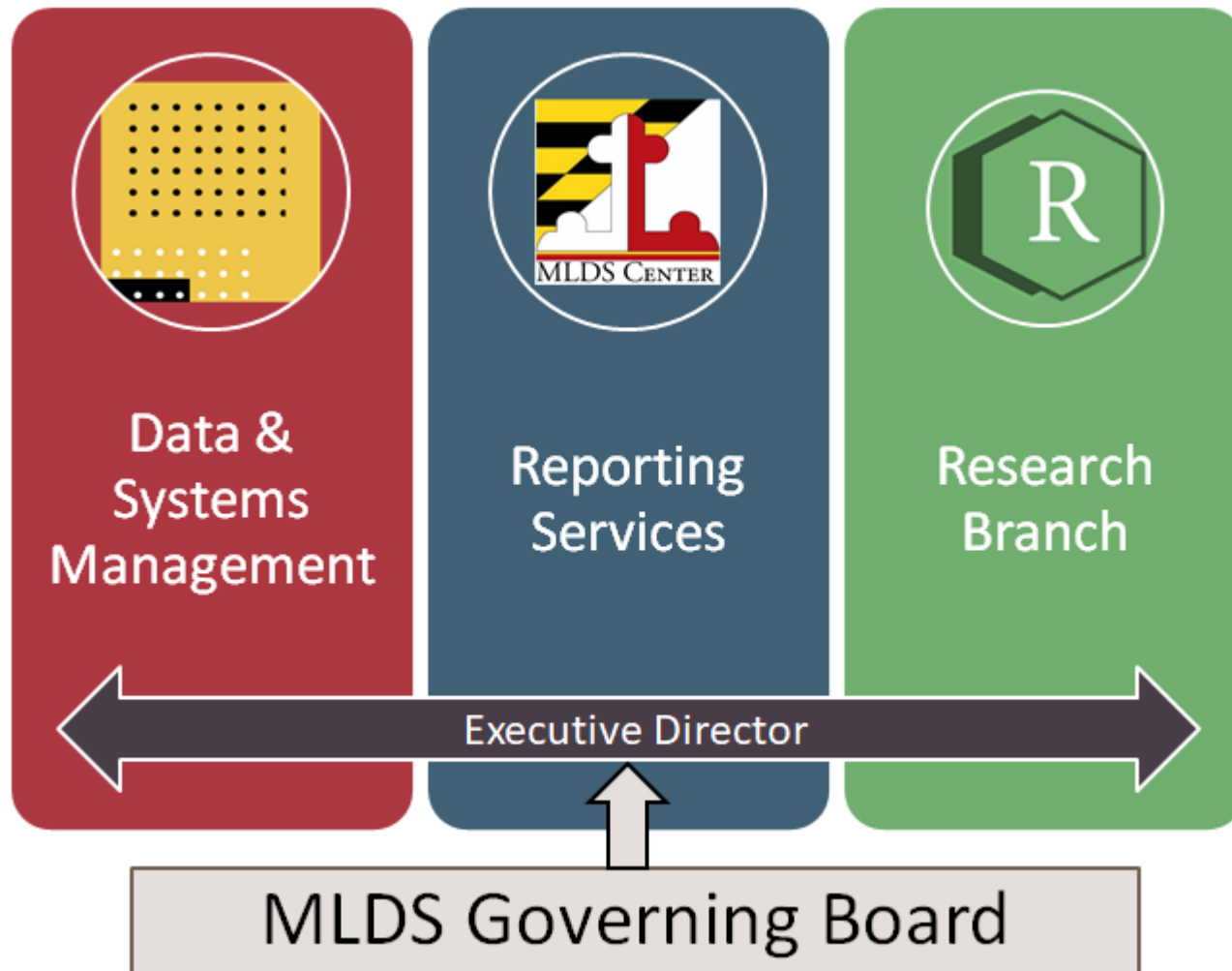
Angela K. Henneberger, Ph.D.
Research Director

MLDS Center Overview

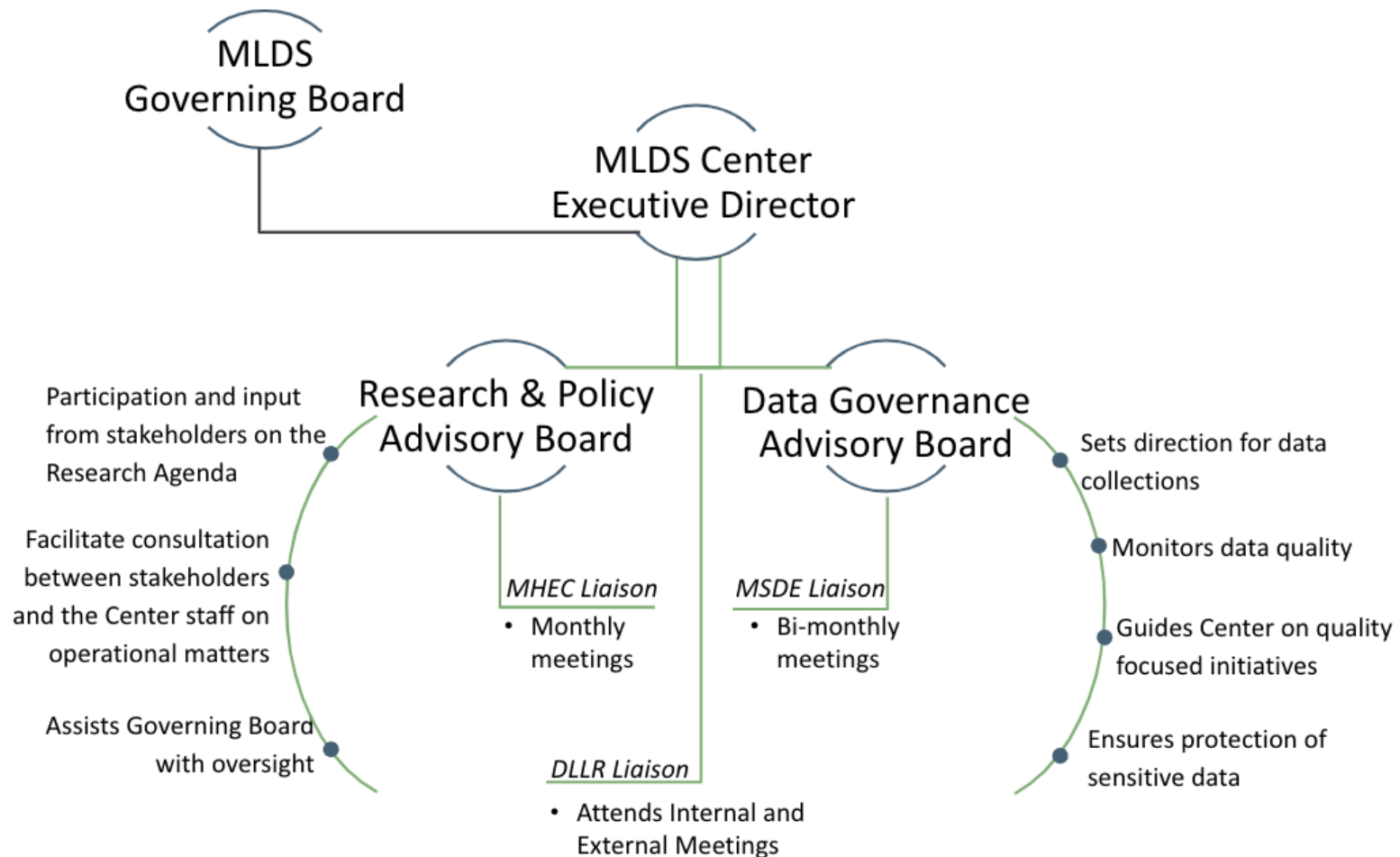
- **Independent state agency** that **develops** and **maintains** a data system containing student and workforce data from all levels of public education and the State's workforce.
- **Generate timely and accurate information** about **student performance** that can be used to **improve the State's education system** and **guide decision makers** at all levels.



MLDS Center Organization

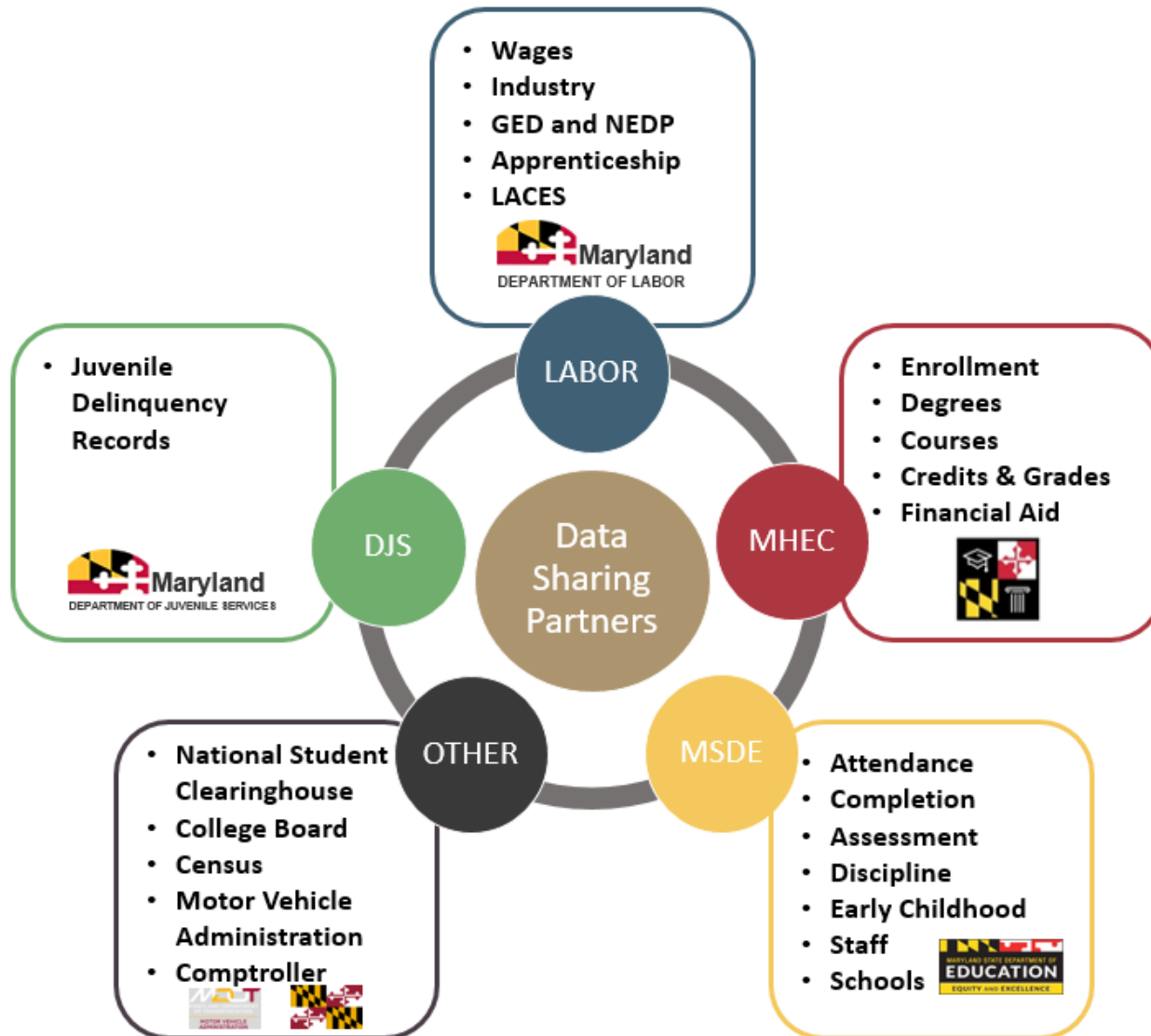


MLDS Center Governance



MLDS Center Data Collections

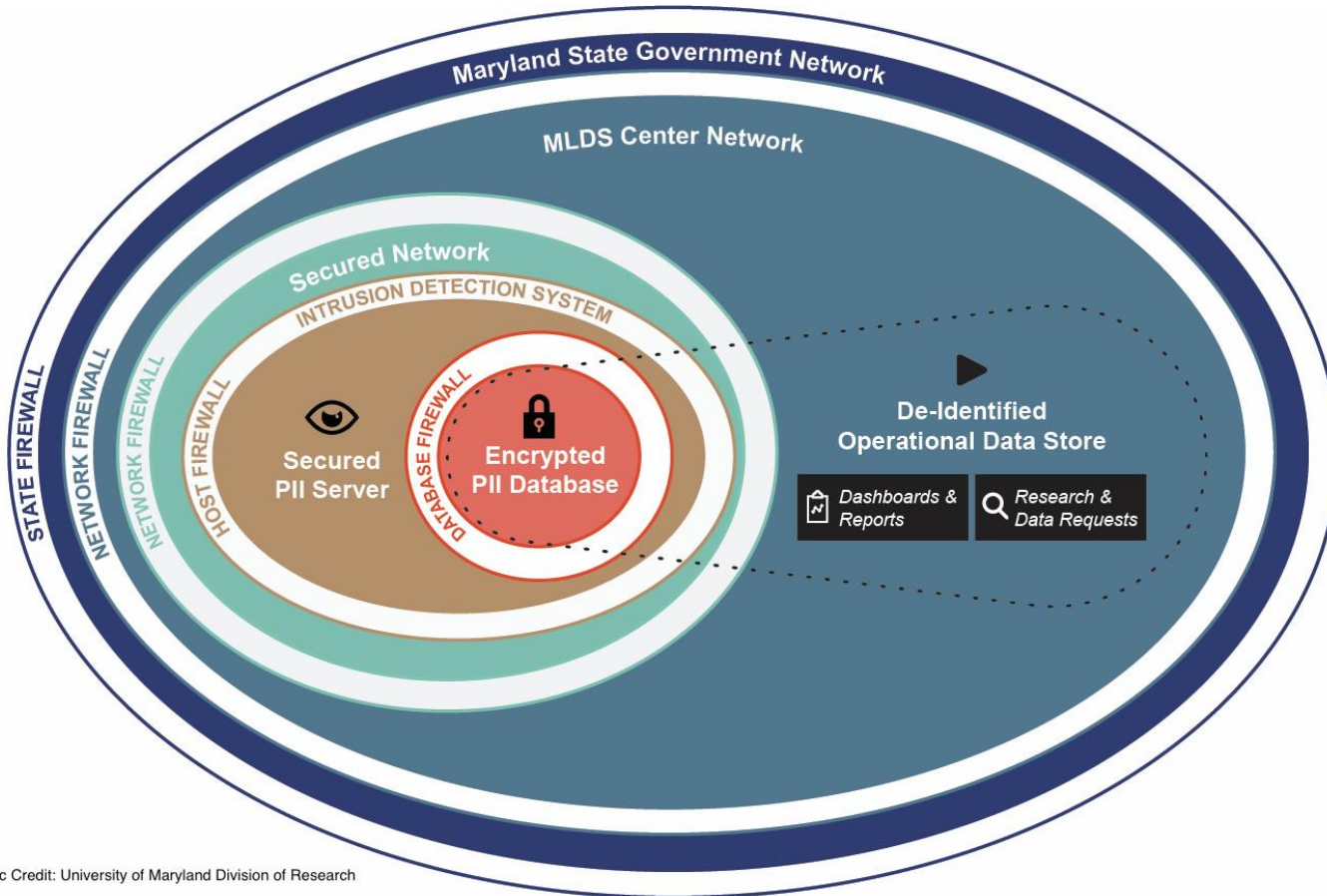
MLDS Data Delivery System



Research Agenda

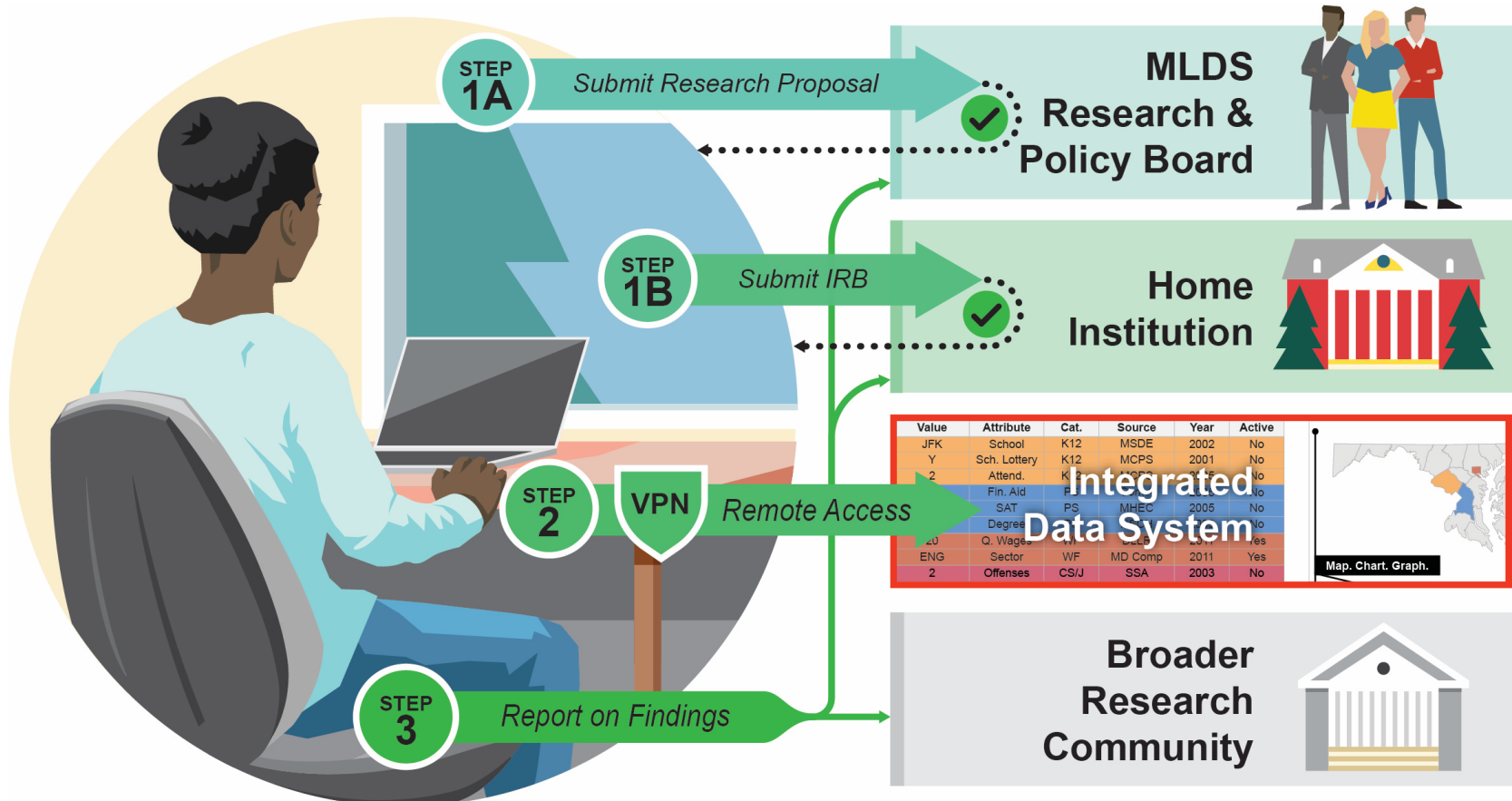
- 21 broad questions set by the MLDS Center governing board
- Organized around critical student transitions
 - K-12 Readiness
 - Postsecondary Readiness and Access
 - Postsecondary Completion
 - Workforce Outcomes
- Research analyses must be cross-sector
- Sample: *Are Maryland students academically prepared to enter postsecondary institutions and complete their programs in a timely manner?*

MLDS System Security



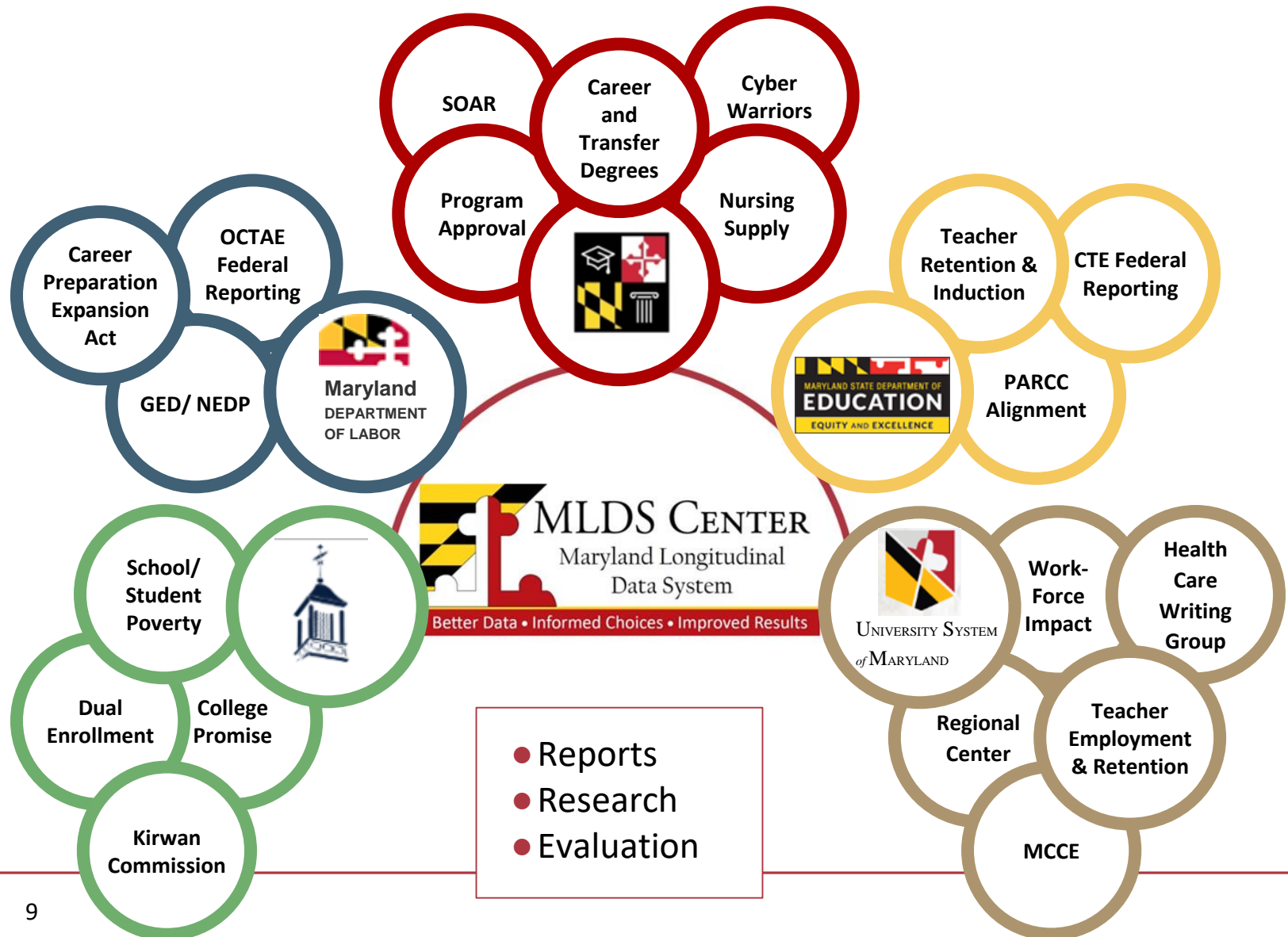
Graphic Credit: University of Maryland Division of Research

Research Access



Graphic Credit: University of Maryland Division of Research

Stakeholder Engagement



A Case Study in Maryland





Angela K. Henneberger, Ph.D.

Research Director

Angela.Henneberger@Maryland.gov

<http://mldscenter.maryland.gov>

